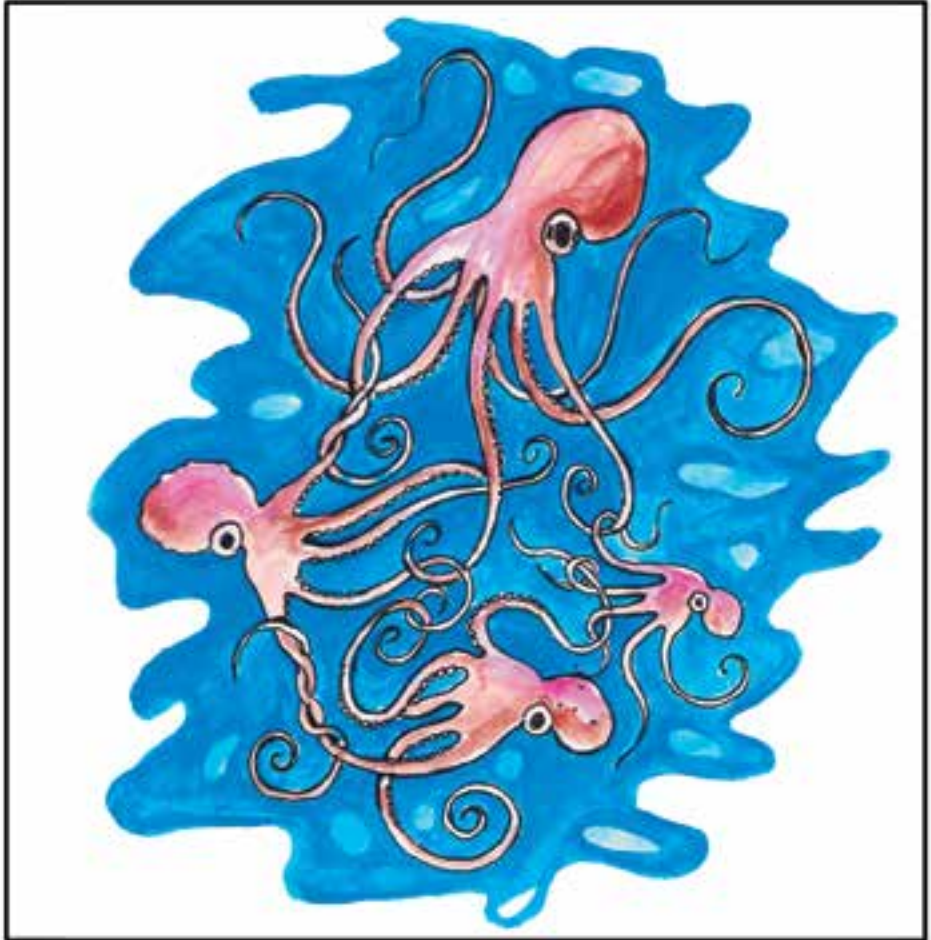


Uchimamizi wa Pweza



The designations employed and the presentation of material in this information product do not imply the expression of any opinion whatsoever on the part of Indian Ocean Commission concerning the legal or development status of any country, territory, city or area or of its authorities, or concerning the delimitation of its frontiers or boundaries. The mention of specific companies or products of manufacturers, whether or not these have been patented, does not imply that these have been endorsed or recommended by Indian Ocean Commission in preference to others of a similar nature that are not mentioned.

The views expressed in this information product are those of the author(s) and do not necessarily reflect the views or policies of Indian Ocean Commission.

© 2015 Indian Ocean Commission

Usimamizi wa Pweza

This comic book was originally published by Blue Ventures in support of sensitization efforts for octopus fishery management in south-west Madagascar. It has been subsequently translated, adapted and re-edited by the Indian Ocean Commission for similar purposes in Rodrigues, Mauritius (French and Creole languages) and Zanzibar (Kiswahili).

CREDITS

ORIGINAL VERSION

Authors: Daniel Raberrinary, Shawn Peabody

Illustrations: Nady Ratsimbazafy

KISWAHILI VERSION

Translation: Baraka Kalangahe

Layout design: Shirley Chan

Contributors: Ali Thani, Joy Juma, Lorna Slade and Yann Yvergniaux



“ This publication has been produced with the assistance of the European Union. The contents of this publication are the sole responsibility of the author and can no way be taken to reflect the views of the European Union.”

MZUNGUKO WA MAISHA YA PWEZA

WANAPOFIKIA UMRI WA MWEZI MMOJA HADI MIWILI, HUANZA KUREJEA KWENNYE MATUMBABWE.

PWEZA WACHANGA HUIWA NI WADOGO MITHILI YA KIDOLE GUMBA NA HUELEA KWENYE MAJI YA BAHARI LIMBALI WA KILOMETA MOJA.



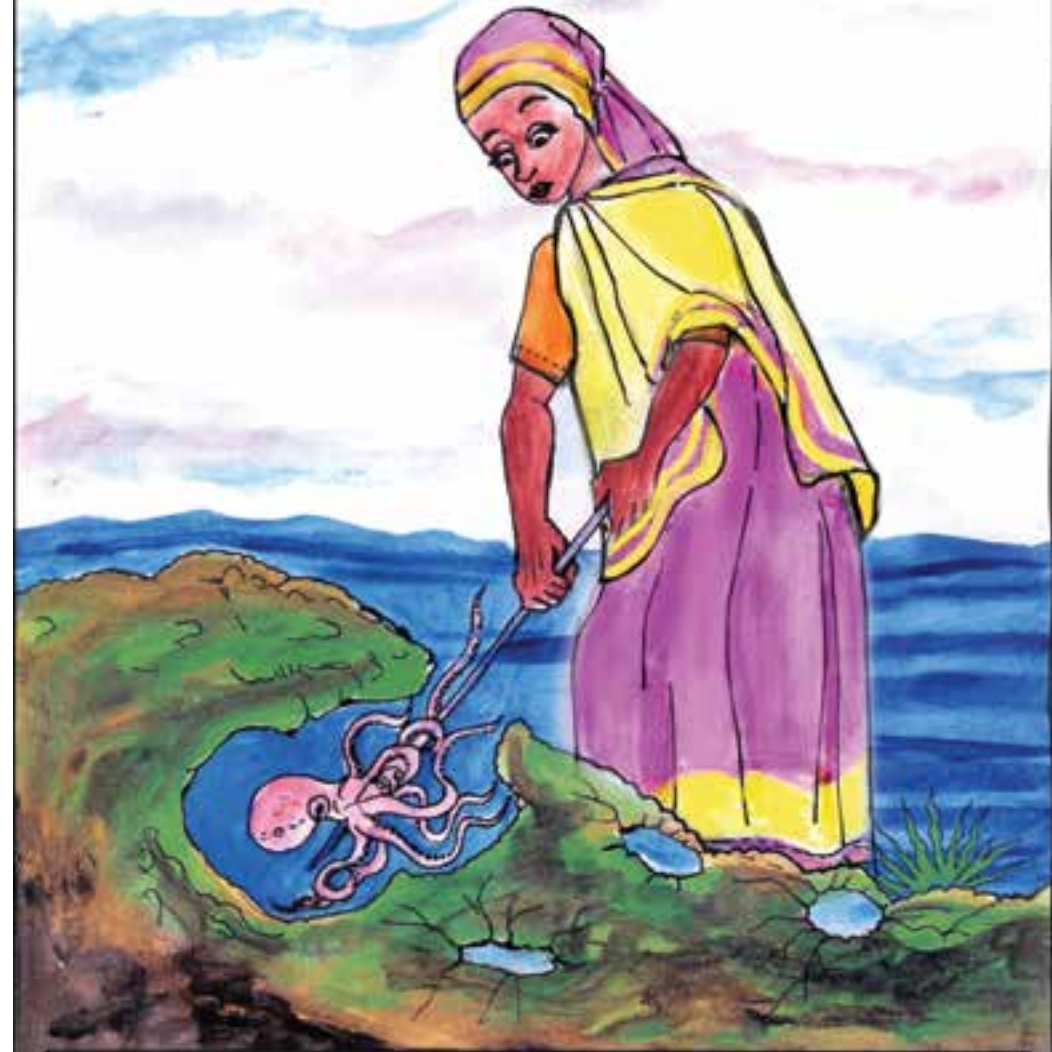
WANAPOKLIWA BADO WACHANGA HUIISHI KWENYE KINA KIFUPI CHA MAJI HUKU WAKILA VIJIDIDI VIDOGO VIDOGO PAMOJA NA KUJIFICHA KWENYE MATUMBABWE.

WANAPOTIMIA UMRI WA MIEZI MINANE HADI KUMI, PWEZA MAJIKE HUITAGA MAYAI KATIKA MASHIMO YA MATUMBABWE KWENYE MAJI YA KINA KIREFLI.

MAYAI HUANGLIWA KWENYE MASHIMO YALIYOPO KWENYE MATUMBABWE AMBAPO PWEZA WACHANGA HUSAMBAZWA NA MIKONDO YA MAJI YA BAHARI.

SEHEMU KUBWA YA MAISHA YA PWEZA HUIISHI KATIKA MIAMBA YA MATUMBABWE WAKIWINDA WAKATI WA MCHANA NA KULA VISAMAKI VIDOGO VIDOGO AMBAPO HUIISHI KWA MDA WA WA MIEZI 18 HADI 20 TU. NA KUZAA WATOTO WENGI.

LICHA YA KUWA NA WATOTO WENGI KUNA LIWEZEKANO PWEZA WAKAPLINGUA NA HATA KUTOWEKA KWENYE ENEO HUSIKA.



KWA KUELEWA MZUNGUKO WA MAISHA YA PWEZA TUNAJIFUNZA JINSI YA KUSIMAMIA VIZURI ILI WASITOWEKE NA WAENDELEE KUTOA PATO KWA WAWLVI.

KITU CHA KWANZA KUKIFAHAMU KATIKA USIMAMIZI WA PWEZA NI KWAMBA MATUMBAWE NI MUHIMU KWA PWEZA . MWAMBA WA MATUMBAWE ULIOHARIBIKA HALIWEZI KUTUNZA PWEZA WENGI KWA SABABU KUTAKOSEKANA SEHEMU YA KUJIFICHA NA MALISHO.



KUVUNJA MATUMBAWE KATIKA KIPINDI HIKI KUTASABABISHA UPATIKANAJI WA PWEZA WACHACHE.



KUTUMIA MITAIMBO NA NONDO KUCHOKOLEA PWEZA NI LITARATIBU MBAYA NA USIRUHUSIWE.



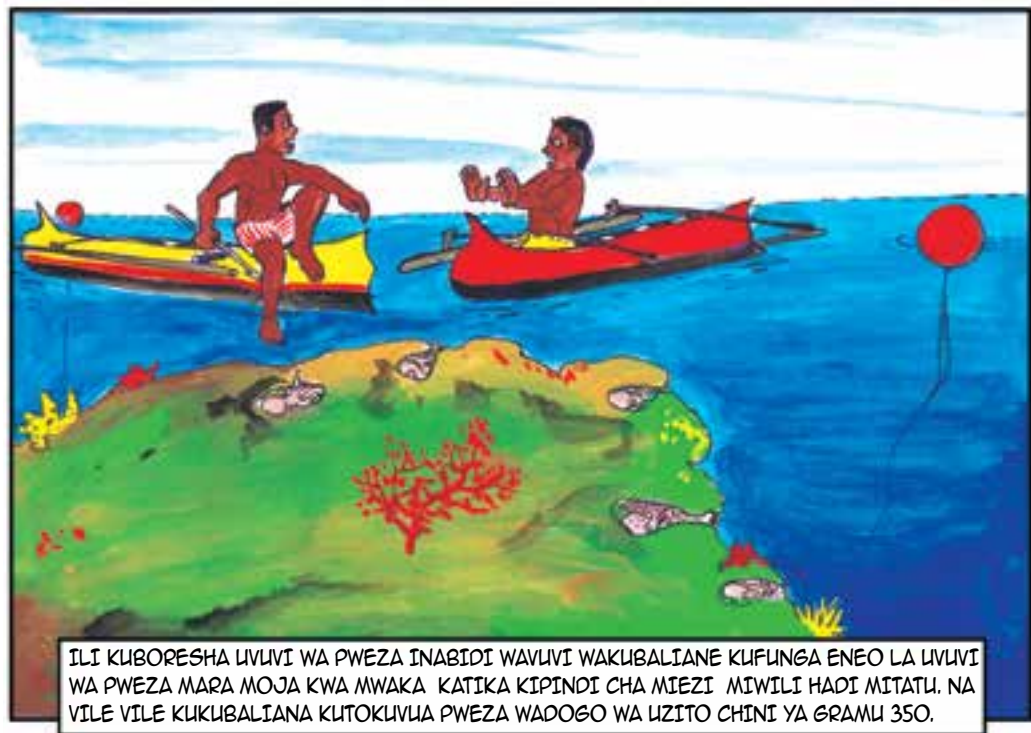
NA HAPO BAADA KUTAKUWA HAKUNA PWEZA.



KITU KINGINE CHA KUFHAMU, PWESA MAJIKE HUTAGA MAYAI YAO KATIKA KIPINDI CHA MWAKA MZIMA NA HUYALINDA MAYAI NDANI YA MASHIMO NA HUIWA HAWATOKI.

PINDI PWEZA MAJIKE WATAKAPOACHIWA WASIVULIWE WATAZAA WATOTO WENGI WATAKAOWEZA KUVULIWA MIEZI INAYOFUATA.

PIINDIPO PWEZA WAKUBWA MAJIKE WATAVULIWA, BASI MAYAI YATAHARIBIKA NA HATIMAYE PWEZA WACHACHE WATAPATIKANA KATIKA MIEZI INAYOFUATIA.



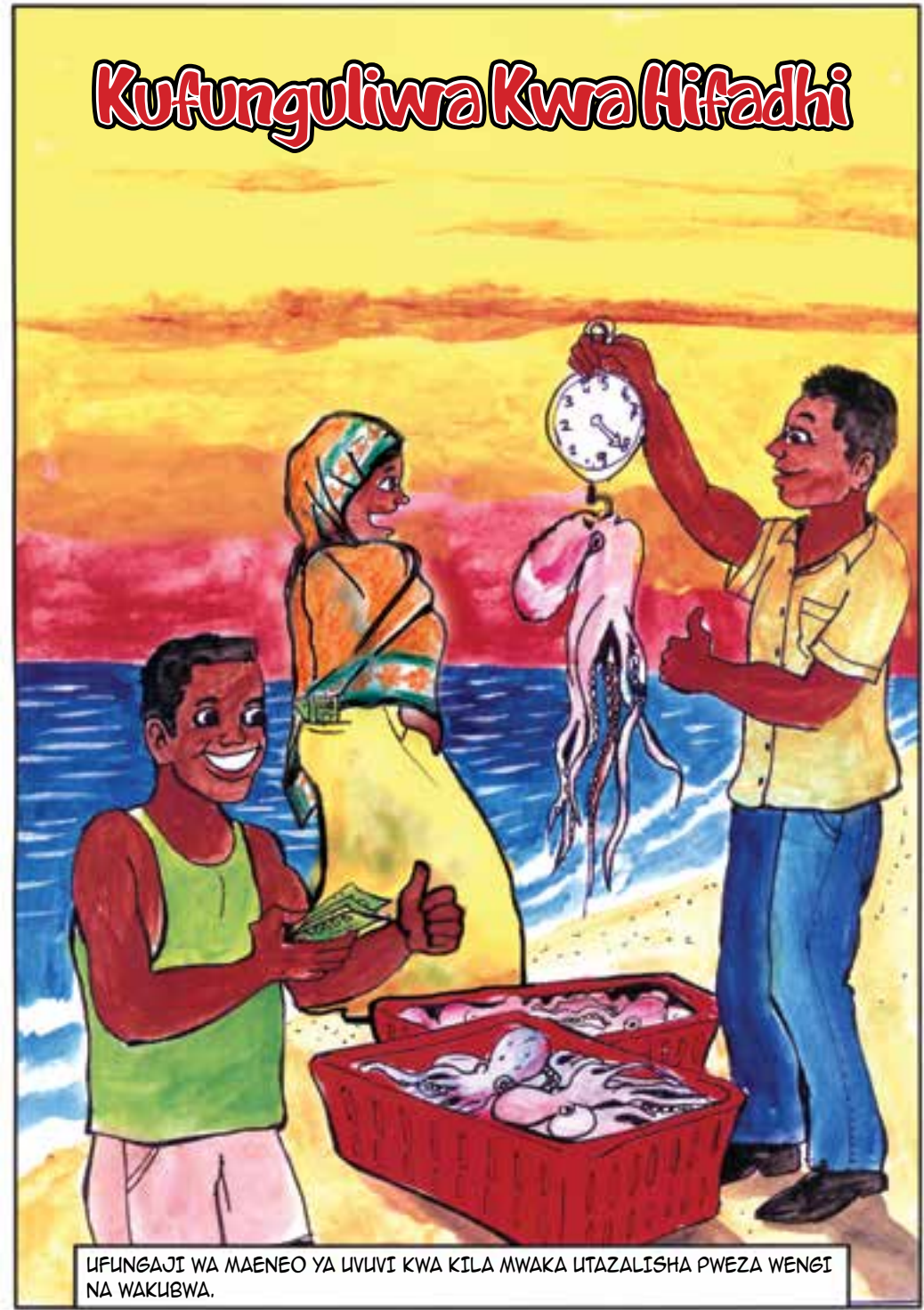
ILI KUBORESHA LIVUVI WA PWEZA INABIDI WAVUVI WAKUBALIANE KUFUNGA ENEO LA LIVUVI WA PWEZA MARA MOJA KWA MWAKA KATIKA KIPINDI CHA MIEZI MIWILI HADI MITATU. NA VILE VILE KUKUBALIANA KUTOKUVUA PWEZA WADOGO WA UZITO CHINI YA GRAMU 350.



KUTOKUVUA PWEZA WACHANGA INATOA NAFASI KWA PWEZA KUKUWA NA KUZALIANA. PIA KUFUNGA MAENEO KUTAHAKIKISHA MAYAI YALIYOTAGWA KUTOTOLEWA. KWA NJIA HII KUTAKUWA NA PWEZA KATIKA MWAKA UNAOFUATIA. WATAALAM WANAEWA KUSHAURI NI KIPINDI KIFI CHA KUWANZA KUVUA.



Kufunguliwa Kwa Hifadhi





PINDIPO TUTAYAFUNGIA NA KUYALINDA MATUMBAWE KWA VIPINDI KILA MWAKA WACHANGA KWENYE MATUMBAWE. BASI WATAWEZA KUTOSHELEZA KWA MAHITAJI

PAMOJA NA KUWALINDA PWEZA YA KILA MTU.

